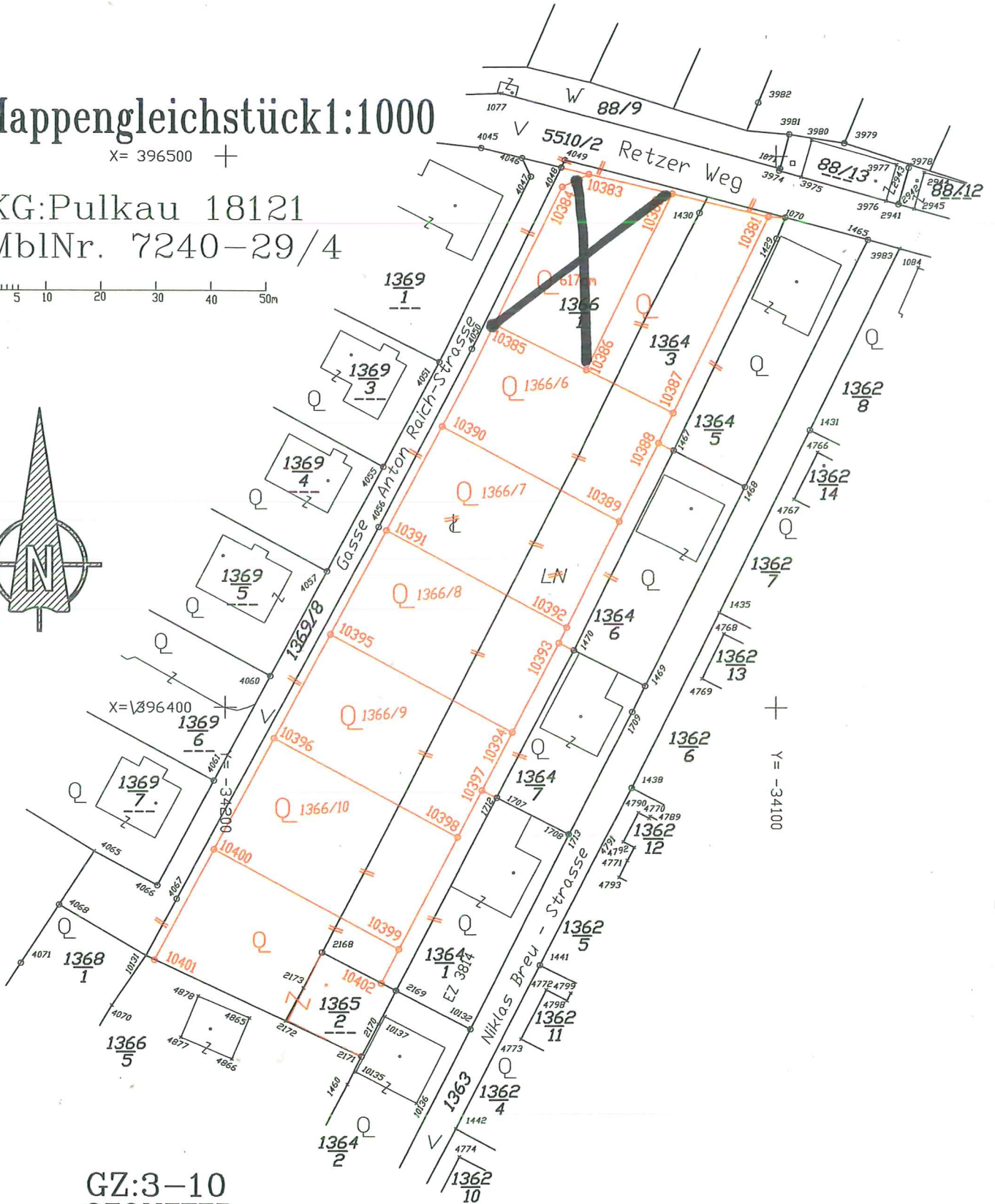
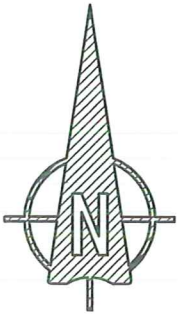


Mappengleichstück 1:1000

X = 396500 +

KG: Pulkau 18121
MblNr. 7240-29/4



**GZ:3-10
GEOMETER**

Dipl. Ing. Wolfgang HOFBAUER
Ing.-Konsulent f. Vermessungswesen
2070 Retz Znaimerstraße 32
Tel 02942/2339 Fax 02942/20282